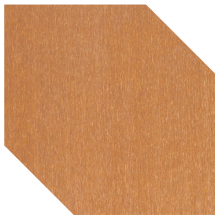


# Galvanic Corrosion

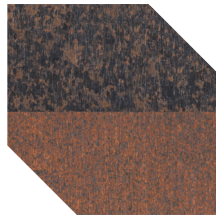
Metals are rated according to their nobility ratings. When dissimilar metals are in contact with each other in the presence of oxygen and moisture, the more noble metal will corrode the less noble. Copper is one of the most noble of metals and must be separated from other less noble metal. Contact between dissimilar metals should always be avoided. Painting, taping or gasket with non-absorptive materials is also effective. Care should be taken to prevent the wash from copper surfaces onto adjacent, exposed less noble metal surfaces, since the traces of copper salts carried in the wash can accelerate the corrosion of less noble metal.

## Direct contact with copper metals

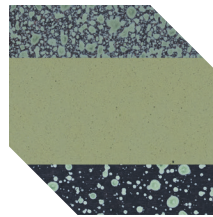
Use only stainless steel or copper screws, nails, fastening accessories when fastening copper metals .  
Nordic Copper can assemble into the direct contact together with stainless steel (1.4301 = Aisi304, 1.4401 Aisi316), lead and with copper & copper alloys (min. Cu-content 80%).



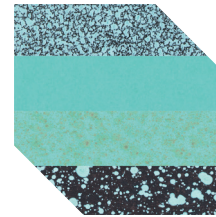
Nordic Standard



Nordic Brown &  
Nordic Brown Light



Nordic Green, all finishes



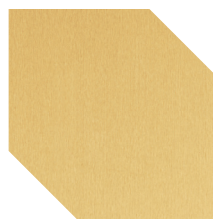
Nordic Blue, all finishes



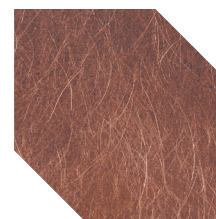
Nordic Brass &  
Nordic Brass Weathered



Nordic Bronze



Nordic Royal



Nordic Décor